



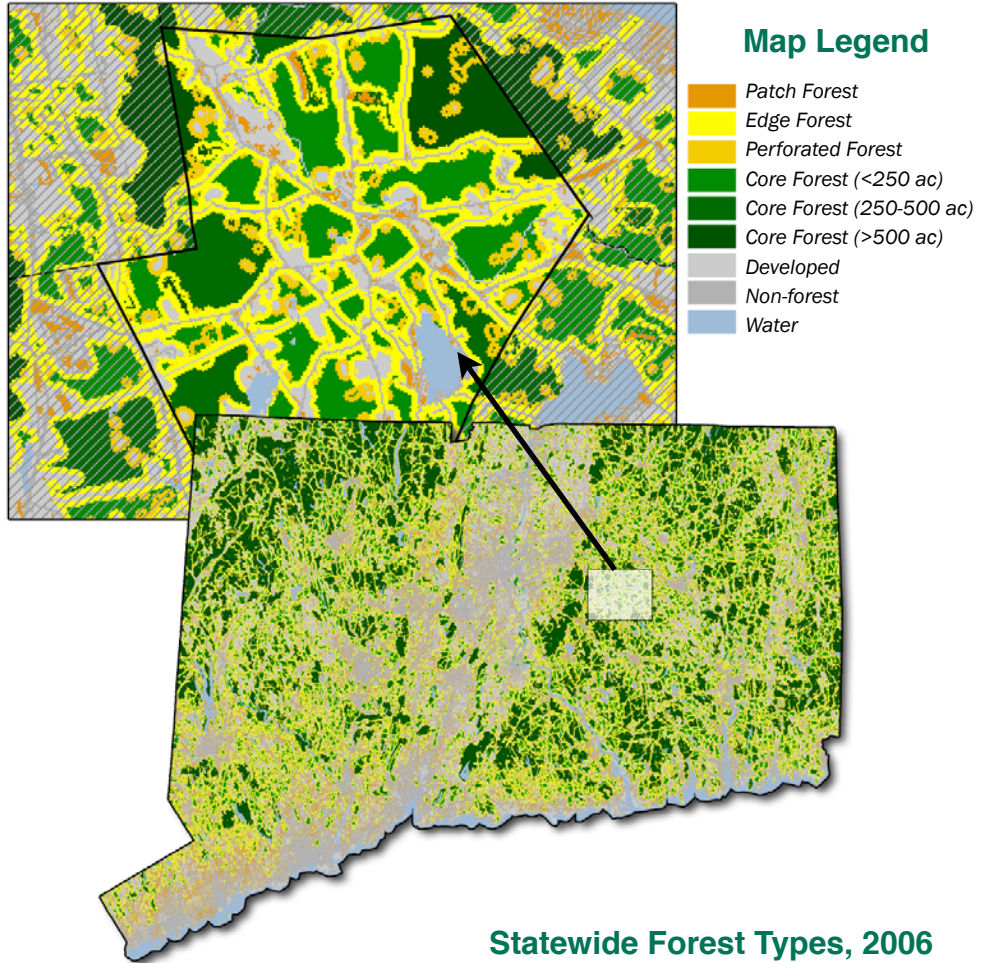
Connecticut's Forest Fragmentation

On the web at: clear.uconn.edu/projects/landscape/forestfrag

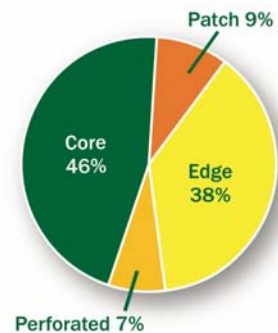
The University of Connecticut Center for Land Use Education and Research (CLEAR) is pleased to announce that the results of our statewide forest fragmentation analysis are now online.

About 60% of the state is classified as “forested,” i.e., covered with trees (as determined by our Connecticut’s Changing Landscape project). However, tree cover alone is not a reliable indicator of the functional health of forested ecosystems, which are greatly impacted by proximity to non-forested areas. By applying CLEAR’s forest fragmentation model to our land cover data, we can get a feel for these issues. For instance, from 1985-2006, the amount of “core” forest decreased by about 264 square miles; this includes conversion both to non-forest, and to the other (impacted) forest classes.

The analysis results are available as statewide, town level, and watershed level maps, data tables and downloadable data. Take a look!



Statewide Forest Types, 2006



(Above) 2006 Forest fragmentation map of Connecticut, with a close-up of Andover from the Your Town portion of the study website.

(bottom right) The pie chart shows the breakdown of forest categories, statewide, in 2006.

