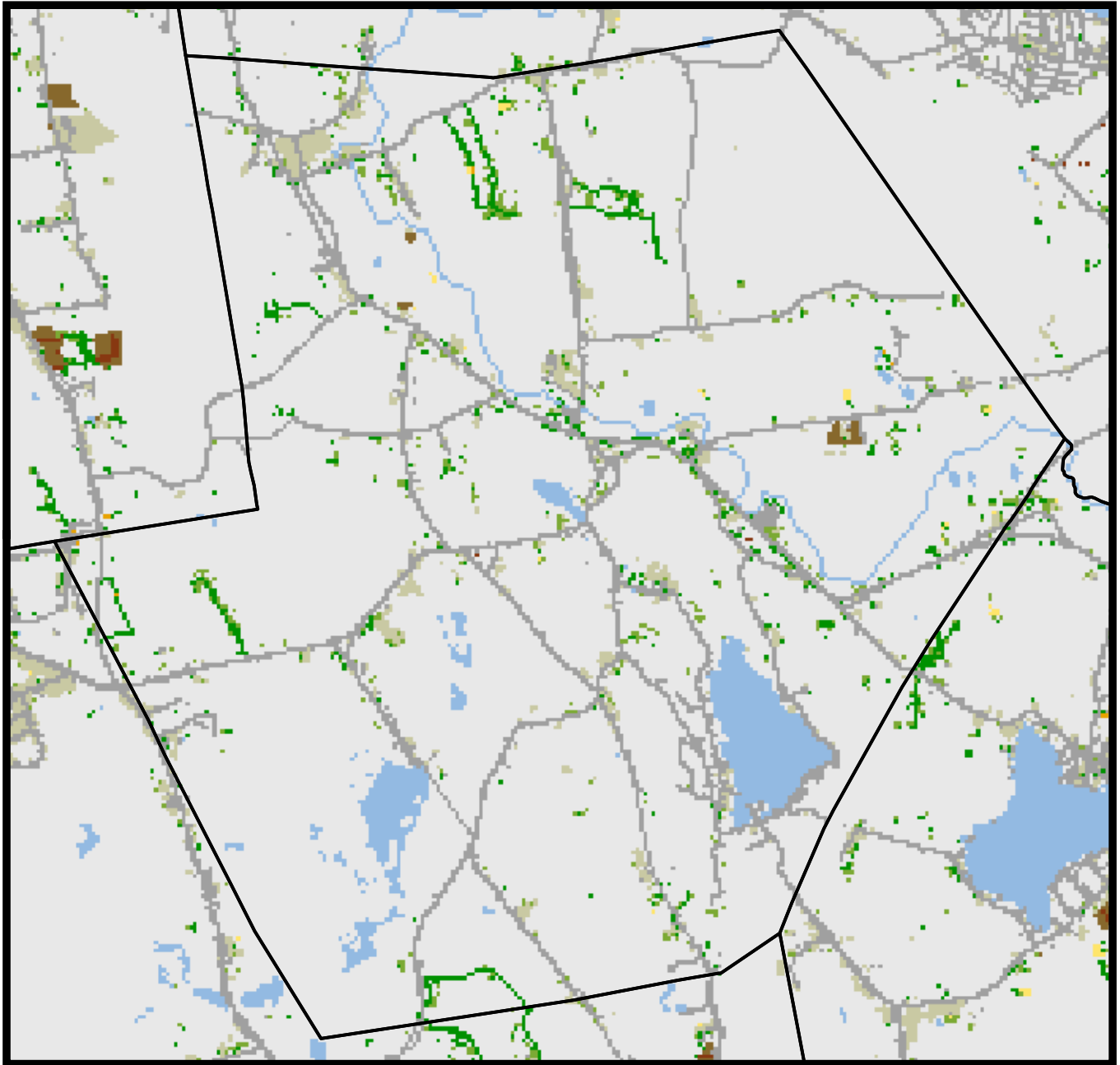


Andover, CT

Land Cover Change

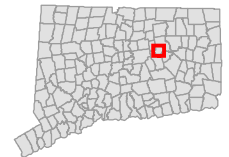
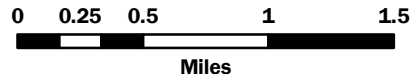
Connecticut's Changing Landscape

1985-2006



Change From :

- | | | | |
|--|--------------|---|------------------------------------|
|  | Developed |  | Agricultural Field to Developed |
|  | Turf & Grass |  | Agricultural Field to Turf & Grass |
|  | Water |  | Forest to Developed |
|  | Undeveloped |  | Forest to Turf & Grass |
| | |  | Other Vegetation to Developed |
| | |  | Other Vegetation to Turf & Grass |



This map is a product of the Center for Land use Education And Research (CLEAR) at the University of Connecticut. For more information on CLEAR or this map, visit

This map is intended for planning and educational purposes only . It is based on the interpretation and classification of remotely sensed satellite images, and the accuracy at any given location cannot be guaranteed. See CLEAR website for more information <http://clear.uconn.edu>.

Copyright University of Connecticut.

This map created 12/22/08.

