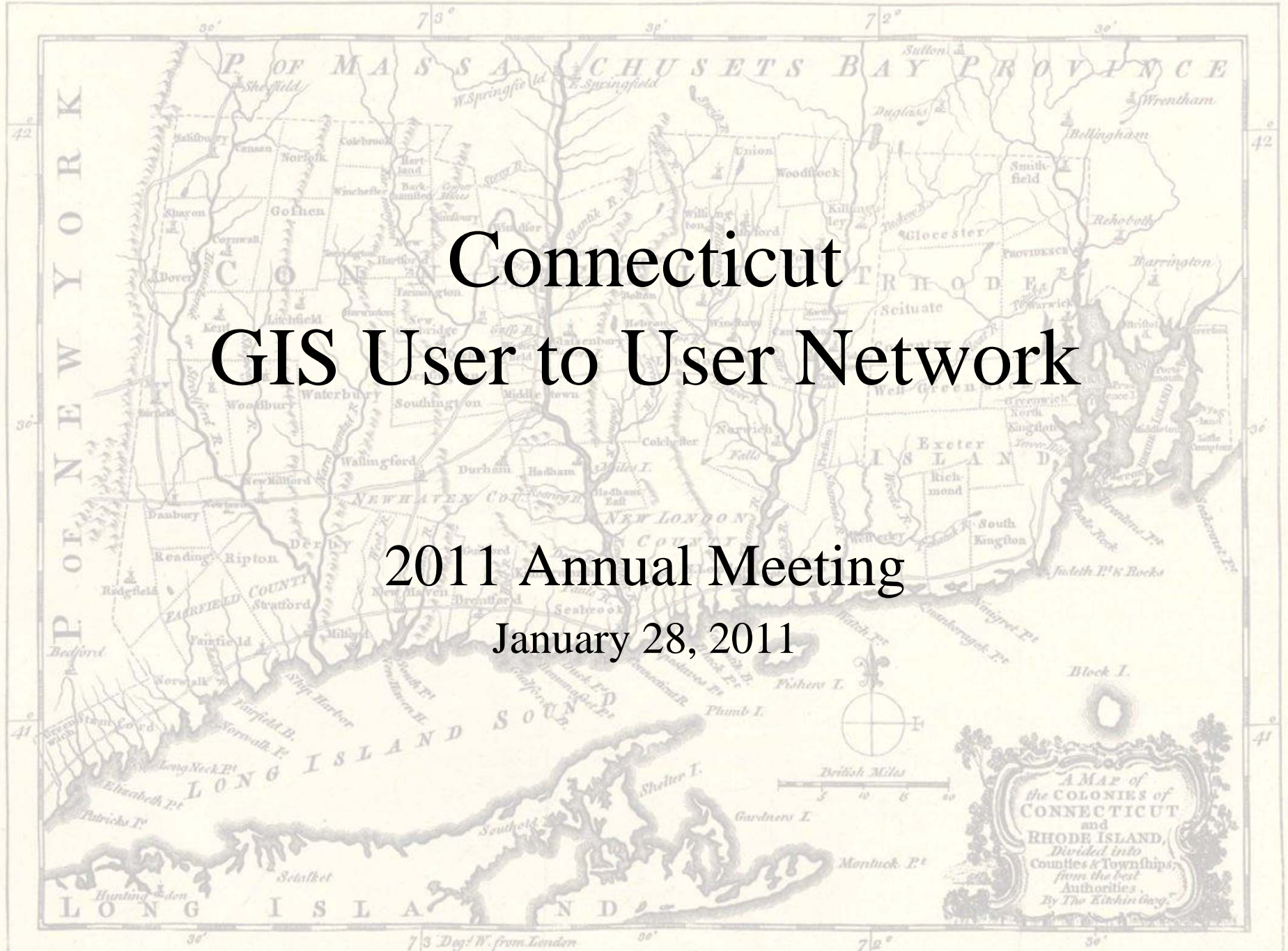


For the Lond. Mag.



Connecticut GIS User to User Network

2011 Annual Meeting
January 28, 2011

Today's Agenda

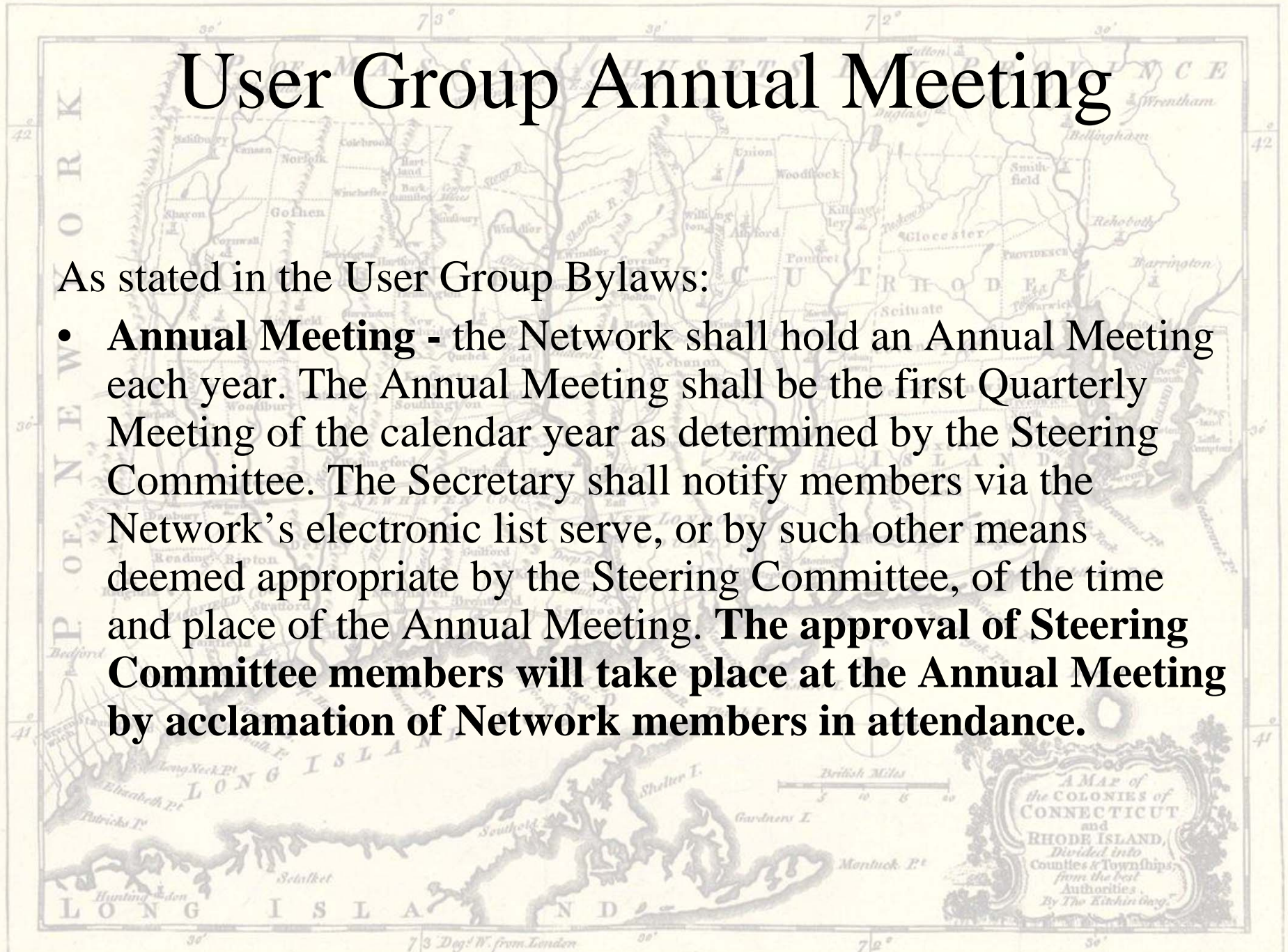
- 8:45 – 9:00 Peer networking
- 9:00 – 9:15 User Group Business
 - Steering Committee Officer elections
- 9:15 – 10:00 ESRI presentation
 - ArcGIS 10 editing environment and the Parcel Fabric Dataset
- 10:00 – 10:15 Break
- 10:15 – 11:00 GISP, Certification & GISCI
- 11:00 – 12:00 Questions, Answers, Networking



User Group Annual Meeting

As stated in the User Group Bylaws:

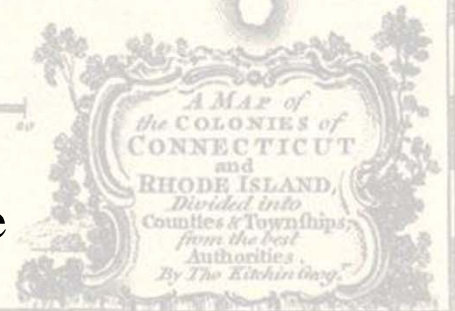
- **Annual Meeting** - the Network shall hold an Annual Meeting each year. The Annual Meeting shall be the first Quarterly Meeting of the calendar year as determined by the Steering Committee. The Secretary shall notify members via the Network's electronic list serve, or by such other means deemed appropriate by the Steering Committee, of the time and place of the Annual Meeting. **The approval of Steering Committee members will take place at the Annual Meeting by acclamation of Network members in attendance.**



The User Group Steering Committee

- **Steering Committee members may serve for a maximum of two consecutive three-year terms.**
- **Officers are limited to one two-year term.**
- In any given year, one-third of the Steering Committee members shall be approved by acclamation at the Annual Meeting except when vacancies may require more than one-third be approved. **Individual Steering Committee members shall be selected to represent the following groups:**

- state government
- regional planning organizations
- municipal government
- public utilities
- non-profit non-governmental organizations
- academia
- private businesses
- two members-at-large



CT GIS User to User Group

Current Steering Committee Members

- President Al Sylvestre, CT Dept. of Labor
- Vice President **Currently Vacant Position**
- Secretary John Harmon, CCSU Dept. Of Geog. Emeritus
- Municipal Rep. Thad Dymkowski, Town of Newington
- Public Utility Rep. Jim Gagnon, Regional Water Authority
- At Large Rep. Mike Howser, UConn MAGIC
- At Large Rep. **Currently Vacant Position**
- RPO Rep. Glenda Prentiss, CNVCOG
- Non-Proffit Rep. *Arroll Borden, United Way*
- Private Business Rep. **Currently Vacant Position**

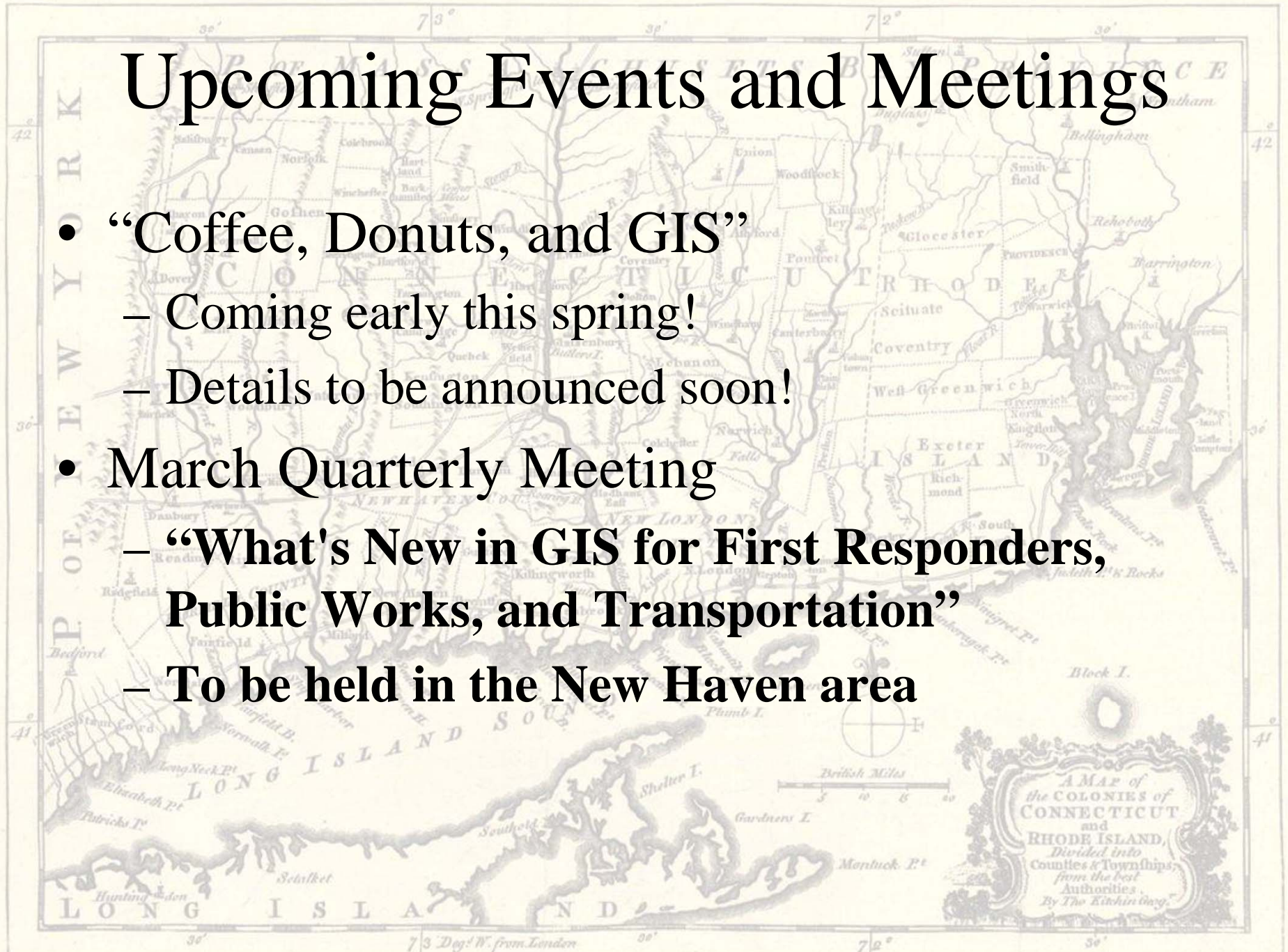
A historical map of Connecticut and Rhode Island, titled 'AMAP of the COLONIES of CONNECTICUT and RHODE ISLAND, Divided into Counties & Townships, from the best Authorities. By The Kinging.' The map shows various counties and townships, including Hartford, New London, and Providence. It includes a compass rose and a scale bar for British Miles. The map is framed by a double-line border with latitude and longitude markings.

CT GIS User to User Group Steering Committee Election

- Nominations for officer positions
 - Vice President (currently vacant)
- Election of Officers
 - Vice President
- Volunteers for other currently vacant positions
 - Private Business Rep
 - Non-profit Rep
 - Member at Large

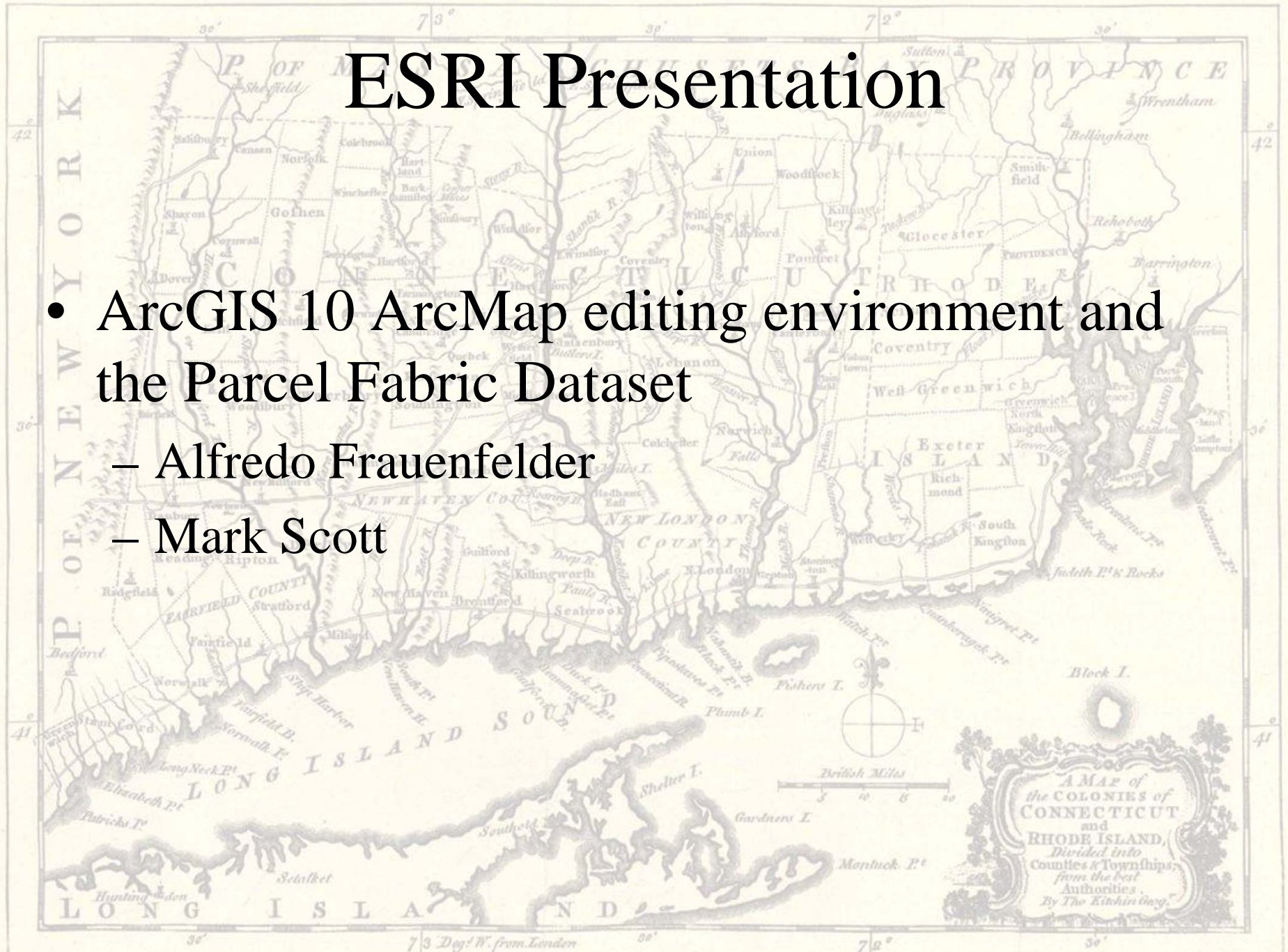
Upcoming Events and Meetings

- **“Coffee, Donuts, and GIS”**
 - Coming early this spring!
 - Details to be announced soon!
- **March Quarterly Meeting**
 - **“What's New in GIS for First Responders, Public Works, and Transportation”**
 - To be held in the New Haven area



ESRI Presentation

- ArcGIS 10 ArcMap editing environment and the Parcel Fabric Dataset
 - Alfredo Frauenfelder
 - Mark Scott



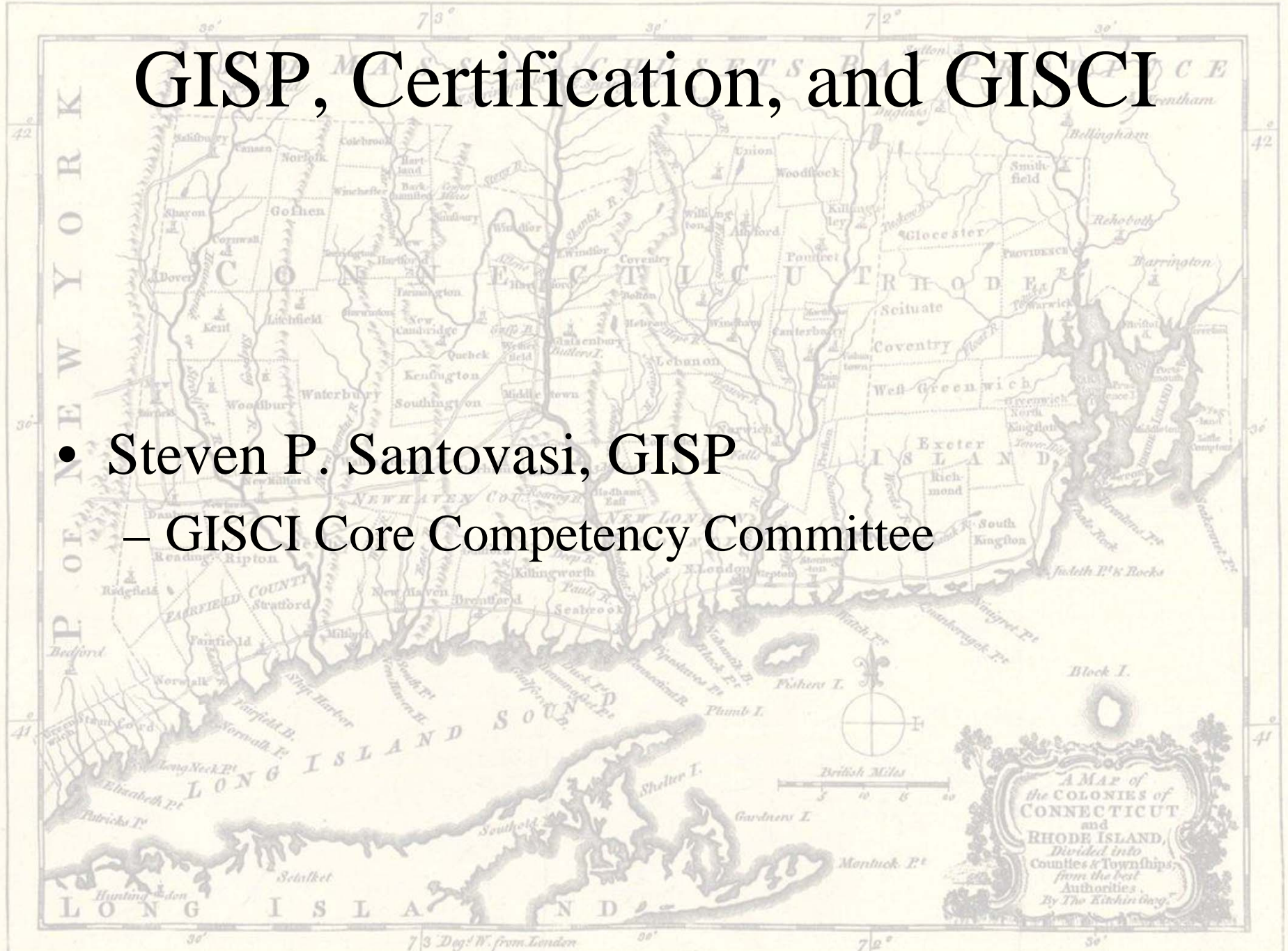
For the Lond. Mag.



Break Time

GISP, Certification, and GISCI

- Steven P. Santovasi, GISP
– GISCI Core Competency Committee



Thank you for coming!
See you in the Spring!

- Questions?
- Web page

—<http://ctgis.uconn.edu/>

